

CET नवनीत सराव प्रश्नपत्रिकांबाबत...

- CET प्रश्नपत्रिकेच्या सरावासाठी 5 प्रश्नपत्रिका QR Code वर देण्यात आल्या आहेत.
- इयत्ता अकरावी CET ची प्रश्नपत्रिका सोडवण्यासाठी कालावधी 2 तासांचा आहे.
- CET च्या प्रश्नपत्रिकेमध्ये पुढील चार विषयांवर प्रत्येकी 25 गुणांचे असे एकूण 100 प्रश्न असतील; या गुणविभागणीचा तपशील पुढीलप्रमाणे आहे. त्या बरहुकूम प्रस्तुत CET नवनीत सराव प्रश्नपत्रिका (SEMI-ENGLISH) तयार करण्यात आल्या आहेत.

| अनुक्रमांक | विषयाचे नाव | गुण |
|------------|--|------------|
| 1. | English | 25 |
| 2. | Mathematics (Part I & II) | 25 |
| 3. | Science & Technology (Part 1 & 2) | 25 |
| 4. | सामाजिक शास्त्रे (इतिहास – राज्यशास्त्र व भूगोल) | 25 |
| | एकूण गुण | 100 |

- या प्रश्नपत्रिकेची उत्तरे OMR उत्तरपत्रिकेवर नोंदवायची आहेत.
 - विद्यार्थ्यांना OMR उत्तरपत्रिकांचा सराव मिळावा, म्हणून 'CET नवनीत क्वेश्चन बँक (SEMI-ENGLISH)' या पुस्तकाच्या शेवटी कोऱ्या OMR उत्तरपत्रिका देण्यात आल्या आहेत.
 - विद्यार्थ्यांनी सरावासाठी दिलेल्या CET सराव प्रश्नपत्रिका या OMR उत्तरपत्रिकांवर सोडवाव्यात.
 - OMR उत्तरपत्रिकांवर उत्तरे कशी नोंदवावीत, उत्तरे नोंदवताना कोणकोणती दक्षता घ्यावी याबाबत पुढे दिलेल्या सूचना काळजीपूर्वक वाचा आणि त्या काटेकोरपणे अमलात आणा :
- (1) उत्तराचा गोल भरण्यासाठी काळ्या किंवा निळ्या यांपैकी एकाच शाईच्या बॉलपेनने तो संपूर्ण भरावा.
 - (2) गोल ठळकपणे भरावा आणि तो संपूर्णपणे भरावा.
 - (3) दिलेल्या जागेतच गोल भरावा. त्या व्यतिरिक्त उत्तरपत्रिकेवर अन्यत्र कुठेही कोणत्याही खुणा करू नयेत किंवा ठिपके देऊ नयेत.
 - (4) उत्तरे नोंदवण्यापूर्वी काही कच्चे काम करायचे असल्यास, ते प्रश्नपत्रिकेच्या शेवटी असलेल्या पानावरील कोऱ्या जागेतच करावे. उत्तरपत्रिकेवर कोठेही कच्चे काम करू नये.
 - (5) उत्तराचा गोल भरण्याची –

योग्य पद्धत

(A) ● (C) (D)

चुकीच्या पद्धती

(X) (B) (C) (D)

(A) (B) (C) (D)

(A) (B) (C) (I)

(A) (B) (C) (D)

- वर दिल्यानुसार OMR उत्तरपत्रिकांवर प्रश्नपत्रिका सोडवण्याचा भरपूर सराव करा.
- 'CET नवनीत क्वेश्चन बँक (SEMI-ENGLISH)' मध्ये QR Code वर दिलेल्या पाचही सराव प्रश्नपत्रिकांची अचूक उत्तरेही QR Code वर देण्यात आलेली आहेत.
- विद्यार्थ्यांनी आपण सोडवलेली प्रश्नपत्रिका या उत्तरांवरून पडताळून पाहावी; जेणेकरून त्यांना आपली तयारी अजमावता येईल आणि अधिक अचूकतेकडे जाण्यासाठी प्रयत्न उंचावता येतील.

बोर्डाच्या अकरावी CET साठी विद्यार्थ्यांना हार्दिक शुभेच्छा!

प्रश्न. पुढील प्रत्येक उपप्रश्नासाठी चार पर्यायी उत्तरे दिली आहेत. त्यांपैकी अचूक पर्याय निवडून त्याच्या वर्णाक्षराचे वर्तुळ OMR उत्तरपत्रिकेत रंगवा : (Four alternative answers are given for each sub-question given below. Choose the correct alternative and darken its circle in the OMR sheet :)

विभाग 1 : English

1. is the correct spelling from the following.
(A) scenary (B) scenery
(C) senery (D) senary.
2. is the antonym of 'general'.
(A) attachment (B) irregular
(C) particular (D) commander.
3. The noun form of 'vacant' is
(A) vacancy (B) vacation
(C) vaccination (D) vacantation.
4. The homophone of 'hell' is
(A) hail (B) hell
(C) heil (D) haiel
5. Choose the correct word to complete the following word chain of adjectives.
tall, long, energetic.
(A) gone (B) gentle
(C) green (D) glue
6. Choose the correct word to combine with 'black' and to make compound word.
(A) colour (B) cloud
(C) blood (D) board
7. We decided to settle in Mahabaleshwar.
(The infinitive in this sentence is)
(A) we (B) decided
(C) to settle (D) in Mahabaleshwar.
8. The correct word register for a 'book' is
(A) pages, chapter, editor, writer
(B) poet, prose, drama, writer
(C) writer, editor, printer, reader
(D) writer, editor, exercise, assignment

For Qs. 9 to 13 : Read the following passage and do the activities based on it by choosing the proper alternative :

In 2020, a dry cough and fever would have been clear Covid-19 symptoms, and if headaches and aching limbs had been added to the mire, it would have been a clear case of flu. With a sniffy nose and sore throat, it was likely you'd been fortunate and only caught a cold.

This is how – in very simplified form we could describe how Covid-19 symptoms were differentiated from those of other illnesses at the beginning of the pandemic. And then came the loss of smell and taste : the major indication of a SARS-COV-2 infection. This is still reliable someone who notices a change in their sense of taste or smell today still have Covid alarm bell going off.

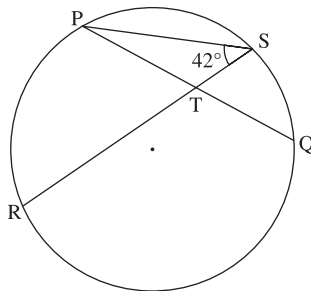
9.was clear Covid-19 symptoms in 2020.
(A) loss of smell and taste (B) dry cough and fever
(C) change in sense of taste (D) a sniffy nose and sore throat.
10. that shows Covid alarm bell going off.
(A) dry cough and fever
(B) loss of smell and taste
(C) a change in sense of taste or smell
(D) a sniffy nose and sore throat.
11. is clear case of flu.
(A) dry cough and fever (B) sniffy nose and sore throat
(C) a change in sensory organs (D) headache and aching limbs.
12. The contextual meaning of 'Pandemic' is..... .
(A) a disease that spreads over a whole country or the whole world.
(B) a disease that spreads over only in a country.
(C) a disease that spreads over in a certain state.
(D) a disease that spreads only in a certain district.
13. We could describe how Covid-19 symptoms were differentiated from those of other illnesses.
(The sentence after using 'to be able to' in this sentence is)
(A) .We are able to describe how Covid-19 symptoms were differentiated from those of other illnesses.
(B) We could able to describe how Covid-19 symptoms were differentiated from those of other illnesses.
(C) We was able to describe how Covid-19 symptoms were differentiated from those of other illnesses.
(D) We were able to describe how Covid-19 symptoms were differentiated from those of other illnesses.
14. The correct masculine noun in the given words is
(A) poetess (B) wife
(C) husband (D) woman

15. Raj is a very simple boy.
(The exclamatory sentence of this sentence is).
(A) How simple boy Raj is !
(B) What a simple boy Raj is !
(C) What a Raj simple boy is !
(D) How Raj is very simple !
16. You can obtain milk at the dairy farm.
(The passive voice of this sentence is).
(A) Milk is obtained at the dairy farm
(B) Milk can obtained at the dairy farm.
(C) At the dairy farm milk is obtained by you.
(D) Milk can be obtained by you at the dairy farm.
17. They took notice of him.
(The sentence is in)
(A) simple present tense (B) simple past tense
(C) simple future tense (D) past perfect tense
18. We have received all the assignments.
(The question tag for this sentence is)
(A) don't we ? (B) didn't we ?
(C) have we ? (D) haven't we ?
19. You may wear whatever you like.
(The underlined clause is)
(A) Main clause (B) Subordinate clause
(C) Adverb clause (D) Indefinite clause
20. It seems that he is fool.
(The simple sentence of this sentence is)
(A) He is fool. (B) He seems to be a fool.
(C) He is fool that it seems. (D) It seems, he is fool.
21. Quantifying goals provide specific ways to track progress.
(The underlined word is)
(A) past participle (B) present participle
(C) gerund (D) None of these
22. Complete the following sentence by choosing appropriate phrase given below.
It is really difficultbad habits.
(A) to leave up (B) to give up
(C) to ponder over (D) to think about

23. The figure of speech used in 'If neither foes nor loving friends can hurt you' is
- (A) Antithesis (B) Personification
(C) Apostrophe (D) Metaphor
24. will be a suitable ending for a letter written by 'An applicant to a prospective employer'.
- (A) Yours sincerely (B) yours lovingly
(C) yours obediently (D) Yours faithfully
25. The meaning of the proverb 'Actions speak louder than words' is
- (A) We should insist on our actions.
(B) What someone does has more value than what someone says.
(C) We should speak more and work less.
(D) Action is more important than work you do.

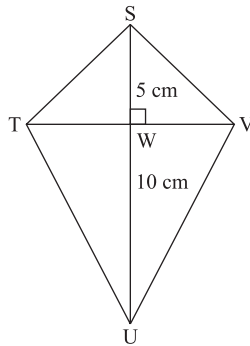
विभाग 2 : Mathematics

26. What is the value of x for drawing the graph of $3x + 7y = 27$, if $y = 3$?
- (A) 2 (B) $\frac{20}{3}$
(C) 9 (D) $\frac{13}{3}$
27. If the distance between point P(2, 2) and Q(5, x) is 5 then the value of x is
- (A) 2 (B) 6
(C) 3 (D) 1
28. Which of the following is a quadratic equation?
- (A) $\frac{5}{x} - 3 = x^2$ (B) $x(x + 5) = 2$
(C) $n - 1 = 2n$ (D) $\frac{1}{x^2}(x + 2) = x$
29. For an A.P., the first two terms are $-3, 4$. The 21st term is
- (A) -143 (B) 143
(C) 137 (D) 17
30. In the figure, chords PQ and RS intersect at T as shown.

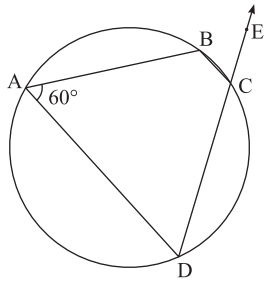


- If $\angle PSR = 42^\circ$ and $m(\text{arc } SQ) = 42^\circ$; then $\angle STQ = \dots$
- (A) 63° (B) 42°
(C) 90° (D) cannot be determined

31. Two dice are rolled simultaneously. E is the event that the sum of the numbers on the upper faces is 6. What is E equal to?
- (A) $\{(1, 5), (5, 1)\}$ (B) $\{(1, 5), (2, 4), (4, 2), (5, 1)\}$
 (C) $\{(1, 5), (2, 4), (3, 3), (4, 2), (5, 1)\}$ (D) $\{(2, 4), (4, 2)\}$
32. $\triangle ABC \sim \triangle DEF$ such that $BC = 3$ cm, $EF = 4$ cm, $A(\triangle ABC) = 54$ cm² then $A(\triangle DEF) = \dots\dots\dots$
- (A) 96 cm² (B) 54 cm²
 (C) 9 cm² (D) 16 cm²
33. What are the coordinates of the point of intersection of the graphs of lines $x - 2y = 4$ and $3x - 4y = 10$?
- (A) (2, 1) (B) (-2, 1)
 (C) (2, -1) (D) (-2, -1)
34. (2, 0), (-2, 0) and (0, 2) are the vertices of a triangle, then the triangle is
- (A) Equilateral triangle (B) Isosceles right angled triangle
 (C) Scalene right angled triangle (D) Scalene obtuse angled triangle
35. The first four terms of an A.P. having the first term -7 and the common difference 3 are
- (A) -7, -10, -13, -16, ... (B) -7, 4, -1, 2, ...
 (C) -7, -4, -1, 2, ... (D) -7, 10, -13, 16, ...
36. In the figure, $SU \perp TV$, $SW = 5$ cm and $WU = 10$ cm.
 $A(\triangle STV) : A(\triangle TUV) = \dots\dots\dots$



- (A) 1 : 2 (B) 1 : 5
 (C) 1 : 3 (D) 1 : 1
37. What is the solution of the equations $x - y = 10$ and $x + y = 70$?
- (A) (40, 30) (B) (30, 40)
 (C) (10, 60) (D) (60, 10)
38. Side DC of a cyclic quadrilateral is produced to point E. $\angle DAB = 60^\circ$, then measure of $\angle BCE = \dots\dots\dots$



- (A) 120° (B) 60°
 (C) 30° (D) 45°

39. A die is rolled. What is the probability of getting a prime number on the upper face?

(A) $\frac{1}{4}$

(B) $\frac{1}{3}$

(C) $\frac{1}{2}$

(D) $\frac{3}{4}$

40. $\frac{1 + \tan^2 A}{1 + \cot^2 A} = \dots\dots\dots$

(A) $\sec^2 A$

(B) -1

(C) $\cot^2 A$

(D) $\tan^2 A$

41. Which of the following are the sides of a $30^\circ - 60^\circ - 90^\circ$ triangle?

(A) $2, 2\sqrt{3}, 4$

(B) $2, \sqrt{3}, 4$

(C) $1, \sqrt{3}, 4$

(D) $1, 2\sqrt{3}, 2$

42. What is the nature of the roots of the quadratic equation $16x^2 + 9 = 24x$?

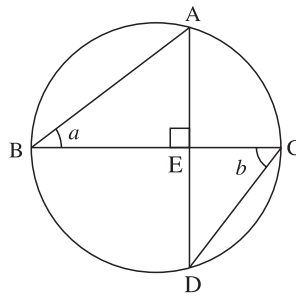
(A) Real

(B) Not real

(C) Real and equal

(D) Real and unequal

43. In the adjoining figure, the value of $a + b$ is



(A) 60°

(B) 180°

(C) 90°

(D) 45°

44. In a flower bed, there are 43 rose plants in the first row, 41 in the second, 39 in the third and so on. If there are 11 rose plants in the last row, then how many rows of rose plant are there in the flower bed?

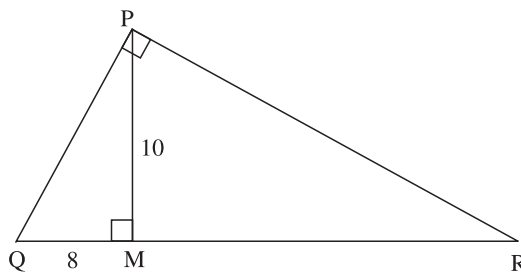
(A) 19

(B) 17

(C) 15

(D) 14

45. In figure, $\angle QPR = 90^\circ$. Seg $PM \perp$ seg QR and $Q-M-R$. $PM = 10$, $QM = 8$ then find QR .



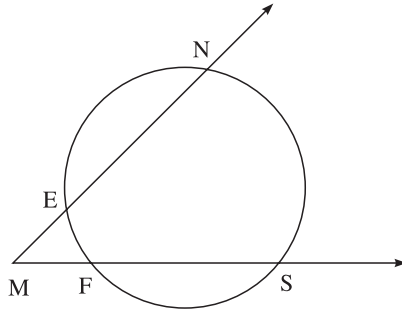
(A) 12.5

(B) 10

(C) 20.5

(D) 12

46. What is the value of k , if one root of the quadratic equation $kx^2 - 14x + 8 = 0$ is 4?
 (A) 3 (B) 4
 (C) 2 (D) 5
47. In the figure, $m(\text{arc NS}) = 125^\circ$, $m(\text{arc EF}) = 37^\circ$ then the measure of $\angle NMS$ is

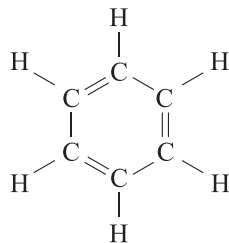


- (A) 62.5° (B) 18.5°
 (C) 44° (D) 81°
48. The value of D for the equations $x + y = 3$ and $3x + ky = 4$ is -5 . What is the value of k ?
 (A) 2 (B) -2
 (C) 1 (D) -1
49. If $\tan \theta = 1$ then the value of $\frac{\sin \theta + \cos \theta}{\sec \theta + \operatorname{cosec} \theta}$ is
- (A) $\frac{1}{2}$ (B) 2
 (C) $\frac{1}{\sqrt{2}}$ (D) $\sqrt{2}$
50. If $a \cos \theta + b \sin \theta = m$ and $a \sin \theta - b \cos \theta = n$, then $a^2 + b^2 = ?$.
 (A) $m^2 - n^2$ (B) $m^2 n^2$
 (C) $n^2 - m^2$ (D) $m^2 + n^2$

विभाग 3 : Science

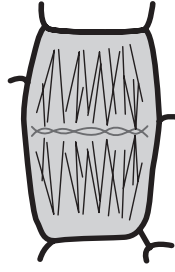
51. The value of 'g' is lowest at
- (A) equator (B) poles
 (C) half the radius of the Earth (D) one-fourth the radius of the Earth
52. Alkaline earth metals have valency 2. This means that their position in the modern periodic table is in
- (A) Group 2 (B) Group 16
 (C) Period 2 (D) d -block
53. The chemical reaction in which a reactant combines with oxygen or loses hydrogen to form the product is called reaction.
- (A) oxidation (B) reduction
 (C) redox (D) substitution

54. A device changing electrical energy into mechanical energy is known as
 (A) Electric generator (B) Electric motor
 (C) Water boiler (D) Electric bulb
55. An electrical iron uses a power of 1100 W when set to higher temperature. The iron is connected to a potential difference of 220 V, the electric current flowing through electrical iron is
 (A) 5 A (B) 1.5 A
 (C) 0.5 A (D) 0.15 A
56. According to the 'Principle of heat exchange', the heat lost by a hot body is equal to
 (A) heat gained by a cold body (B) heat lost by a cold body
 (C) heat gained by a hot body (D) latent heat absorbed by body
57. If the refractive index of glass with respect to air is $\frac{3}{2}$, what is the refractive index of air with respect to glass?
 (A) $\frac{1}{2}$ (B) 3
 (C) $\frac{1}{3}$ (D) $\frac{2}{3}$
58. It is due to which of the following that one can distinguish different colours?
 (A) Rod cells (B) Retina
 (C) Cornea (D) Cone cells
59. In the electrolytic reduction of alumina, the graphite lining at the inner side of steel tank act as
 (A) cathode (B) anode
 (C) catalyst (D) membrane
60. In a less reactive metal is coated on a more reactive metal by electrolysis.
 (A) Galvanising (B) Electroplating
 (C) Tinning (D) Anodization
61. The given structural formula belongs to which carbon compound?



- (A) Camphor (B) Benzene
 (C) Starch (D) Glucose
62. Vestigial organ present in human body is proof of evolution.
 (A) alveoli (B) appendix
 (C) liver (D) heart

63. Which phase of mitosis is seen in the following figure?



- (A) Prophase (B) Metaphase
(C) Anaphase (D) Telophase
64. Yeast cell performs asexual reproduction by
(A) fragmentation (B) budding
(C) binary fission (D) regeneration
65. Cells of produce sperms in the testis.
(A) prostate gland (B) germinal epithelium of testes
(C) rete testes (D) urinogenital duct
66. Which of the following is mismatched pair?
(A) Lion tailed monkey – Endangered species (B) Red panda – Indeterminate species
(C) Tiger – Vulnerable species (D) Musk deer – Rare species
67. Which one of the following is perfectly matched pair?
(A) Thermal power plant – Wood (B) Nuclear energy – Uranium
(C) Natural gas – Sulphur (D) Solar energy – Wind
68. Which of the following is considered as a connecting link between non-chordates and chordates?
(A) *Herdmania* (B) *Balanoglossus*
(C) *Amphioxus* (D) *Petromyzon*
69. is a powerful antibiotic against tuberculosis.
(A) Streptomycin (B) Tetracycline
(C) Rifamycin (D) Bacitracin
70. Which of the following microbes have an ability of destroying plastic material?
(A) *Streptomyces* (B) *Actinomycetes*
(C) *Nocardia* (D) *Ideonella sakaiensis*
71. DNA fingerprinting technique is mainly used in
(A) genetic studies (B) forensic sciences
(C) agricultural research (D) horticultural practices
72. Artificial insemination and embryo transfer are the two methods which are used in
(A) animal husbandry (B) gene therapy
(C) cell therapy (D) regenerative therapy

73. What is the objective of laughter club?
 (A) To gather together (B) To reduce stress
 (C) To humiliate others (D) To learn music
74. What is the message shown in the picture?



- (A) Build strong bones (B) Black magic
 (C) Toxic material (D) Danger from ghosts.
75. The writing of critical historical narrative is known as
 (A) Historiography (B) Manuscriptology
 (C) Epigraphy (D) Numismatics

विभाग 4 : सामाजिक शास्त्रे

76. उपलब्ध पुराव्यांचे चिकित्सापूर्वक संशोधन करून घटनांची मांडणी करणाऱ्या लेखनपद्धतीला '.....' असे म्हणतात.
 (A) लेखनशैली (B) इतिहासाची साधने
 (C) इतिहासलेखन (D) निरीक्षण पद्धती
77. इतिहास हा अमूर्त कल्पनांचा नसून तो जिवंत माणसांचा असतो, असा विचार याने मांडला.
 (A) कार्ल मार्क्स (B) लिओपोल्ड रांके
 (C) व्हॉल्टेअर (D) रेने देकार्त
78. भारत इतिहास संशोधक मंडळाची स्थापना यांनी केली.
 (A) न्या. म. गो. रानडे (B) वि. का. राजवाडे
 (C) विष्णुशास्त्री चिपळूणकर (D) महात्मा फुले
79. कोरीव लेखांमुळे पुढीलपैकी कोणत्या बाबीची माहिती मिळू शकत नाही?
 (A) राजांचा काळ व त्यांची वंशावळ
 (B) शासन व्यवस्था व राजकीय घडामोडी
 (C) राजा व मंत्री यांच्यात झालेली गुप्त खलबते
 (D) तत्कालीन सामाजिक रचना
80. सातारा जिल्ह्यातील हे पश्चिम घाटरांगांमधील ठिकाण युनेस्कोच्या जागतिक नैसर्गिक वारशाच्या यादीत समाविष्ट आहे.
 (A) बालाघाटचा डोंगर (B) मेळघाट
 (C) मसाईचे पठार (D) कास पठार

81. ----- हे मराठी भाषेतील पहिले वृत्तपत्र होय.
 (A) दीनबंधू (B) प्रभाकर
 (C) दर्पण (D) केसरी
82. एकोणिसाव्या शतकात ----- हे बहुजन समाजाचे मुखपत्र म्हणून ओळखले जात असे.
 (A) इंदुप्रकाश (B) दीनबंधू
 (C) ज्ञानोदय (D) प्रभाकर
83. २९ ऑगस्ट हा दिवस ----- यांचा जन्मदिवस 'राष्ट्रीय क्रीडादिवस' म्हणून पाळला जातो.
 (A) खाशाबा जाधव (B) मिलखा सिंग
 (C) मेजर ध्यानचंद (D) मारुती माने
84. जगातील पहिला युरोपीय शोधक प्रवासी म्हणून ----- प्रसिद्ध आहे.
 (A) थॉमस कुक (B) गेरहार्ट मर्केटर
 (C) बेंजामिन ट्युडेला (D) मार्को पोलो
85. पुढीलपैकी ----- ही जोडी चुकीची आहे.
 (A) ताडोबा – अभयारण्य (B) चिखलदरा – ऐतिहासिक ठिकाण
 (C) जायकवाडी – धरण (D) घारापुरी – लेणी
86. मुंबई शहरातील पहिल्या प्रतीची सांस्कृतिक वारसा इमारत असलेली छत्रपती शिवाजी महाराज वस्तुसंग्रहालयाची वास्तू ----- स्थापत्यशैलीत बांधलेली आहे.
 (A) मुघल (B) इंडो-ग्रीक
 (C) इंडो-पर्शियन (D) इंडो-गॉथिक
87. 'भारतीय चरित्रकोश मंडळा'ची स्थापना करून ----- यांनी आपले 'भारतवर्षीय चरित्रकोशां'चे तीन खंड संपादित केले.
 (A) श्रीधर व्यंकटेश केतकर (B) रघुनाथ भास्कर गोडबोले
 (C) सिद्धेश्वरशास्त्री चित्राव (D) तर्कतीर्थ लक्ष्मणशास्त्री जोशी
88. देशात सामाजिक न्याय प्रस्थापित करणे या संकल्पनेत पुढीलपैकी कोणत्या बाबीचा समावेश होत नाही?
 (A) नागरिकांवरील अन्यायाची कारणे दूर करणे.
 (B) सर्व नागरिकांचा दर्जा समान मानणे.
 (C) सर्व नागरिकांची आर्थिक स्थिती समान करणे.
 (D) सर्व नागरिकांना विकासाची समान संधी देणे.
89. मतदारसंघ निर्माण करण्याचे काम निवडणूक आयोगाची ----- समिती करते.
 (A) निवड (B) परिसीमन
 (C) मतदान (D) वेळापत्रक
90. स्वातंत्र्यपूर्व काळात देशातील विविध प्रदेशांत आदिवासींनी ब्रिटिशांविरुद्ध उठाव केले, ते प्रदेश व जमाती यांच्या जोड्यांतील चुकीची जोडी कोणती?
 (A) छोटा नागपूर – कोलाम (B) बिहार – संधाळ
 (C) ओडिशा – मुंडा (D) महाराष्ट्र – भिल्ल, रामोशी

91. मसाल्यांच्या पदार्थांसाठी कोणता देश प्रसिद्ध आहे?
- (A) ब्राझील (B) पाकिस्तान
(C) नेपाळ (D) भारत
92. भारताच्या मध्यातून ----- जाते.
- (A) कर्कवृत्त (B) विषुववृत्त
(C) मकरवृत्त (D) अंटार्क्टिक वृत्त
93. कच्छचे आखात कोणत्या राज्याच्या किनारपट्टीवर आहे?
- (A) गोवा (B) महाराष्ट्र
(C) केरळ (D) गुजरात
94. गोदावरी नदी ----- राज्यातून वाहते.
- (A) महाराष्ट्र (B) पंजाब
(C) हिमाचल प्रदेश (D) तमिळनाडू
95. भारतात ----- खारफुटीची वने आढळतात.
- (A) हिमालयाच्या पायथ्याशी (B) वाळवंटी प्रदेशात
(C) दलदलीच्या प्रदेशात (D) हिमालयाच्या अतिउंच प्रदेशात
96. पुढीलपैकी कोणता वनप्रकार ब्राझीलमध्ये आढळत नाही?
- (A) काटेरी (B) सदाहरित
(C) हिमालयीन (D) सूचीपर्णी
97. भारतातील दक्षिण भागात होणारे नगदी पीक कोणते?
- (A) रबर (B) कॉफी
(C) चहा (D) तंबाखू
98. ब्राझीलमधील गवताळ प्रदेशात ----- व्यवसाय मोठ्या प्रमाणावर चालतो.
- (A) खाणकाम (B) मासेमारी
(C) पशुपालन (D) वाहननिर्मिती
99. ब्राझीलचे अतिपश्चिमेकडील ठिकाण ----- हे आहे.
- (A) नासॅटे दो रिआ मोआ (B) पोर्टोविल्हो
(C) रिओ ग्रांडे (D) पोन्टो द सेक्सस
100. भारतातील पूर्व किनारपट्टीवरील बंदर कोणते?
- (A) कोलकाता (B) कोचीन
(C) पोरबंदर (D) कांडला

पुढील link वर क्लिक करून आपली उत्तरे अचूक उत्तरांशी पडताळून पाहा.

<https://bit.ly/2UJOWxh>